

## PANEL-STYLE TEMPERATURE CONTROLLERS

Models 1751/1752 & 1761/1762

These thermocouple controllers were designed for simple installation onto control cabinets by job-shops or original equipment manufacturers. Simple construction and efficient time proven circuits are combined to produce these reliable controllers at a low price. These ON/OFF controllers can be used to control solenoids, motors, pumps, compressors, fans, etc. They can also be used as auto-reset alarm indicators for ovens, freezers or any equipment where temperature extremes can cause product damage.

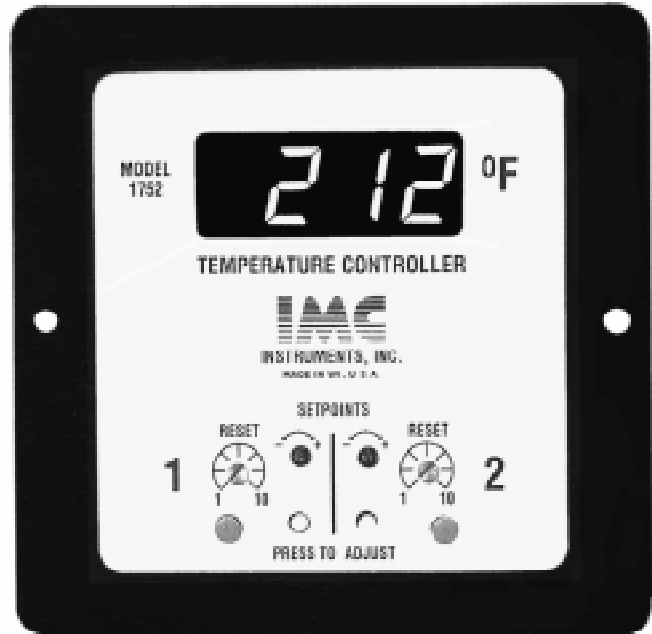
### FEATURES:

**TC calibrations** available are **T, K, J, or E** linearized in four sections for good accuracy (narrow range, lower cost calibrations are available on special order).

**RTD cold junction** compensates accurately for ambient temperature changes as fast as 2° per minute.

**Large bright red display** is about ½" high for excellent readability. Individual digits are mounted in sockets for simple replacement. LED dots indicate output status (on/off).

**Setpoints are simple** to view and adjust with a small screwdriver. Wide setpoint adjustment is provided by a combination of coarse (internal adj.) and fine (external adj.) trimmers with excellent setpoint resolution.



**ENGINEERED AND MANUFACTURED IN WI, U.S.A.**

**High impedance design** allows sense locations to be as far away as 1000 feet using 24 ga. thermocouple wire. Also, several monitors may be connected to the same thermocouple line without signal loss.

### SPECIFICATIONS:

#### **Display Range:**

-199° to 1999° F or C. Usable range varies with TC type (see ordering section).

#### **Measuring Accuracy:**

±½% of reading ±1 degree using ANSI millivolt-temperature standards.

#### **Instrument Environmental Range:**

-15° to 130° F (-26° to 54° C) and 90% R.H. max. (no condensation).

#### **Cold Junction Offset:**

One degree max. for an ambient range of 32° to 110° F ( 0° to 43° C).

#### **Display Indication:**

Updated three times per second on LED digits 0.56" (14 mm) high.

#### **Control Action:**

Selectable high (cooling) or low (heating) with 1-2 second delay and 1 degree repeatability. Reset is adjustable 1 to 10 degrees.

#### **Construction:**

Aluminum front and open back with features provided for panel mounting.

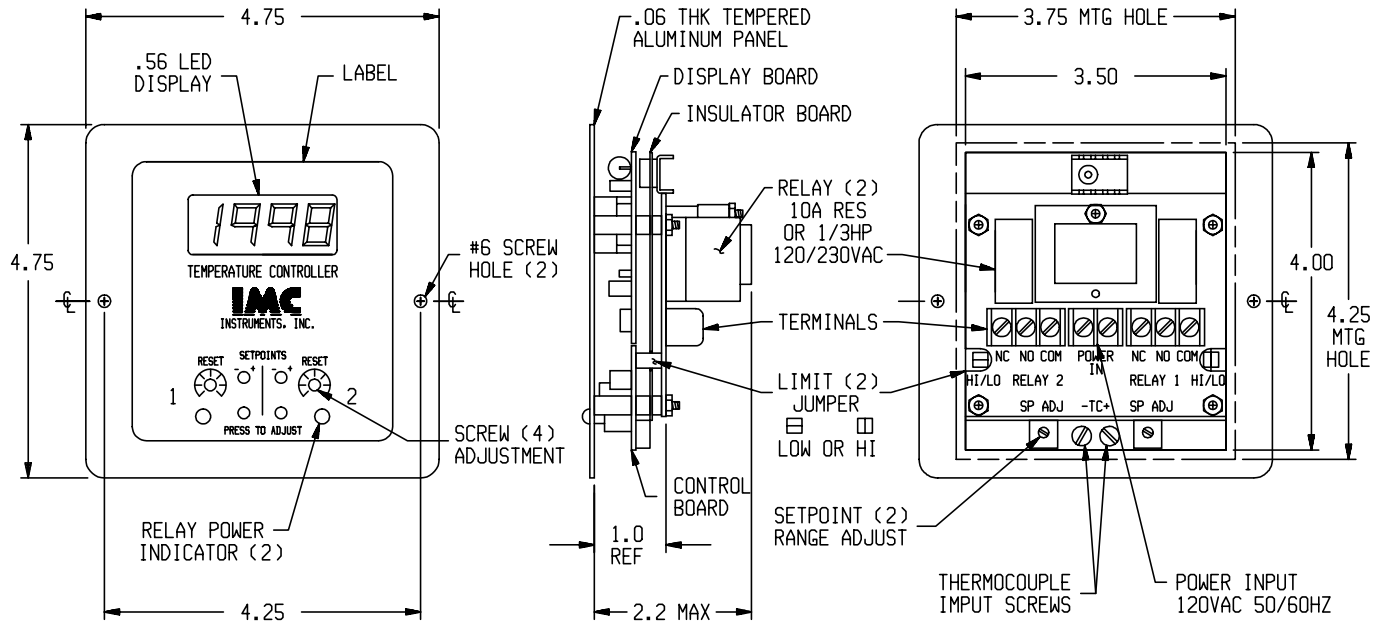
#### **Power Requirement:**

120VAC at 0.2 amp. or 230VAC.

#### **Weight:**

Appx. 13 ounces (0.4kg).

**MECHANICAL DETAIL:** Model 9420-1752 shown, other models have slight differences.



ALL DIMENSIONS ARE INCHES

**ORDERING INFORMATION:**

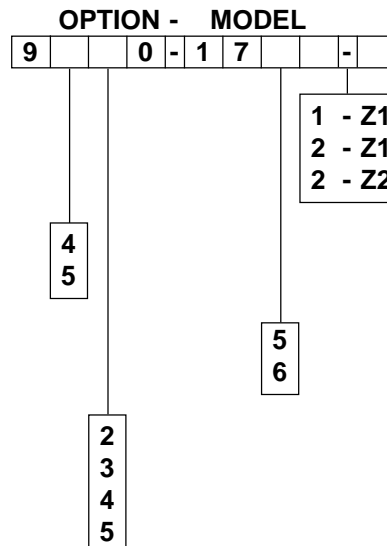
Refer to sheet titled "PERMANENT INSTALLATION TC PROBES" for the selection of wire and probes to complete any measuring system. All prices listed below are F.O.B. factory or distributor warehouse. Contact distributor listed below for assistance. Products are warranted against material or workmanship defects for a full year from date of shipment. Orders under \$ 100.00 will be charged \$ 5.25 for handling.

**SETPOINTS:** \_\_\_\_\_  
 Single with 1 - 10A Relay  
 HI - LO with 1 - 10A Relay  
 Dual with 2 - 10A Relays

**POWER INPUT:** \_\_\_\_\_  
 120 VAC Back Mounted  
 230 VAC Back Mounted

**SCALE:** \_\_\_\_\_  
 Fahrenheit reading  
 Celsius reading

**THERMOCOUPLE CALIBRATION:** \_\_\_\_\_  
 K type 1/2% range is -60 to 2000°F (-50 to 1100°C)  
 T type 1/2% range is -60 to 400 °F (-50 to 205°C)  
 J type 1/2% range is -60 to 1400°F (-50 to 750°C)  
 E type 1/2% range is -60 to 1650°F (-50 to 900°C)



Prices and specifications are subject to change without notice

DS1751-04/96



**INSTRUMENTS, INC.**

N60W14434 Kaul Avenue, Menomonee Falls, WI 53051

Tel: (262) 252-4620 Fax: (262) 252-4623

www.imcinstruments.com sales@imcinstruments.com

**DISTRIBUTED BY:**